



# Données satellitaires et leurs usages en montagne

## Survol 3D des Alpes



Equipe Atelier 3D du CNES

19/10/2017



## Sites Kalideos sur les Alpes

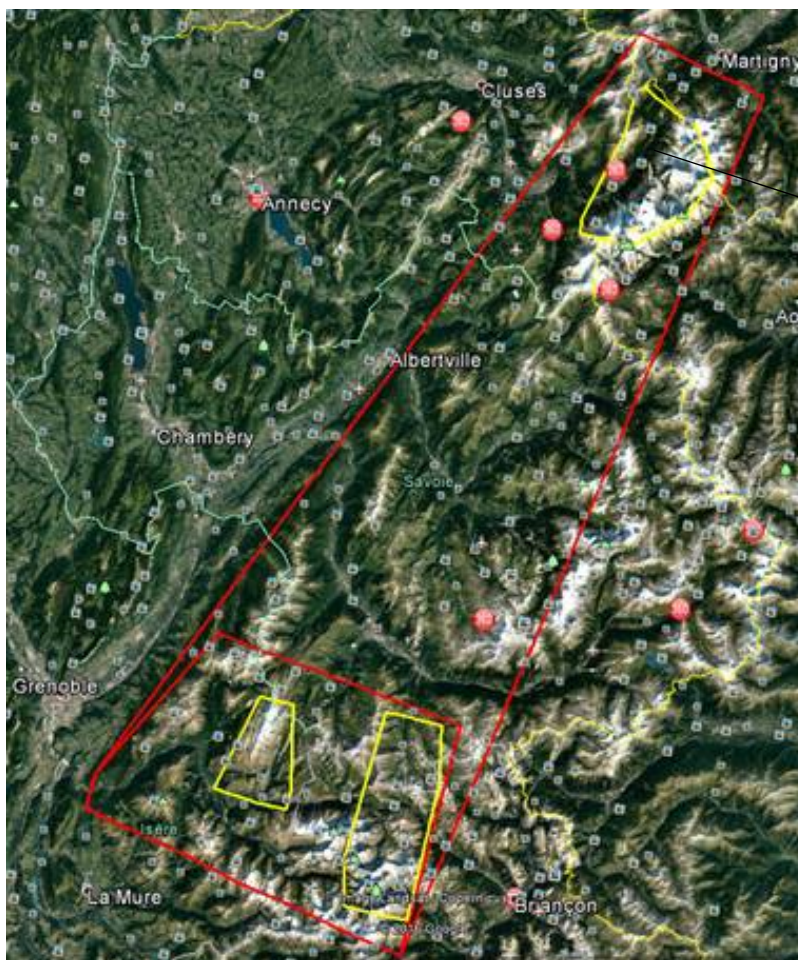
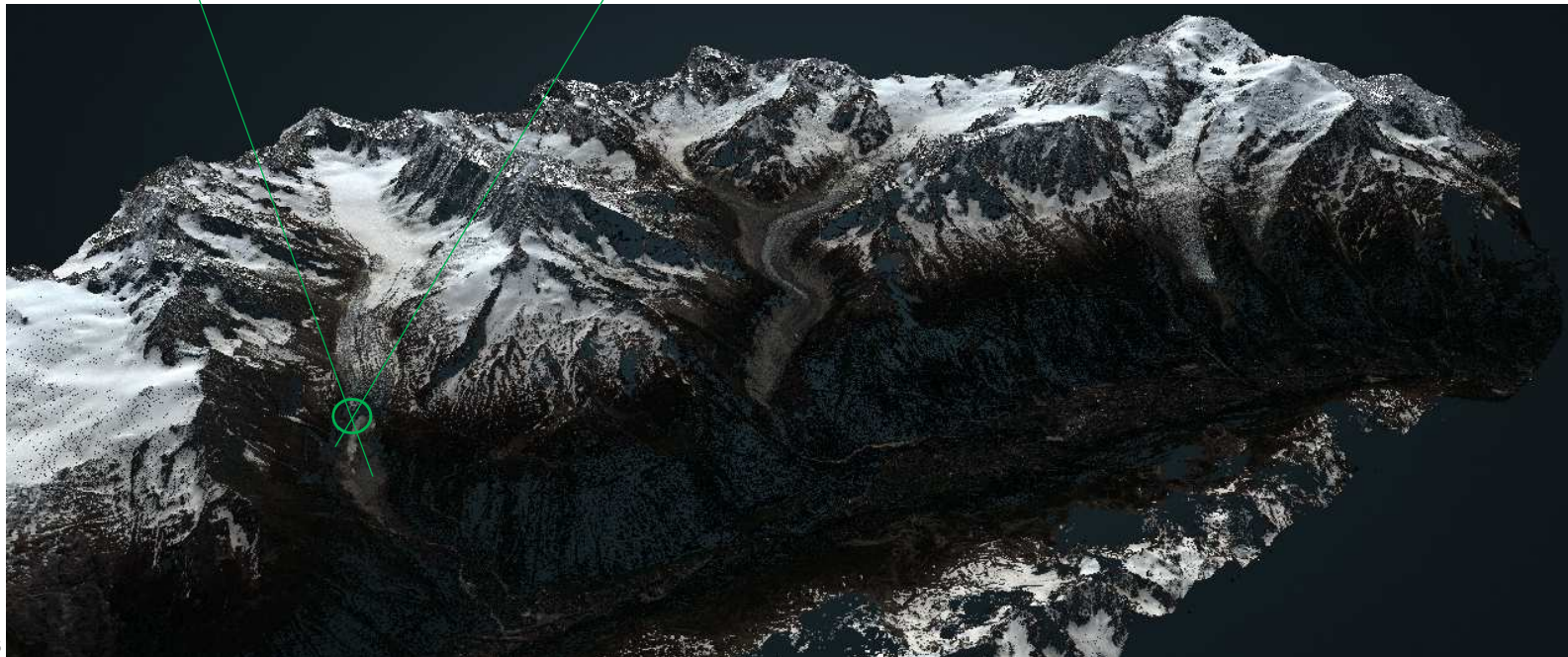
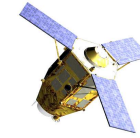
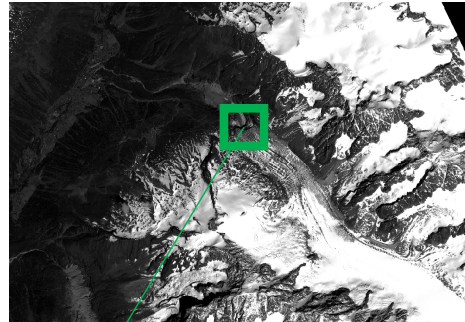
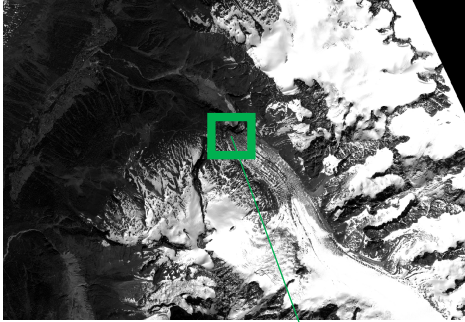


Image Pléiades HR 1A Mont-Blanc du  
10/06/2017

# Extrait Paire Pléiades HR1A et nuage de points 3D



## Argentière : Modèle Numérique de Surface et image colorée



Direction des Systèmes Orbitaux – sous-direction des Systèmes Instrumentaux